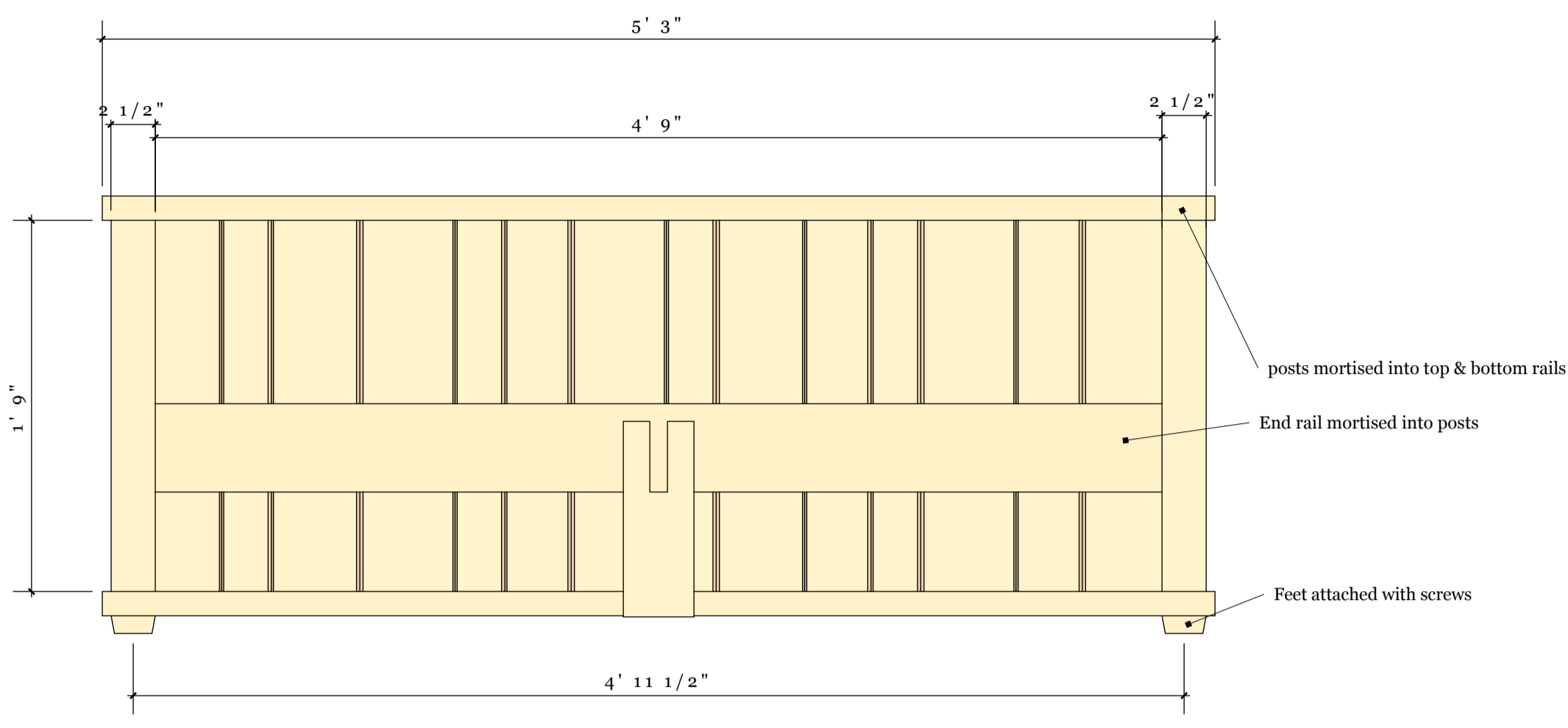
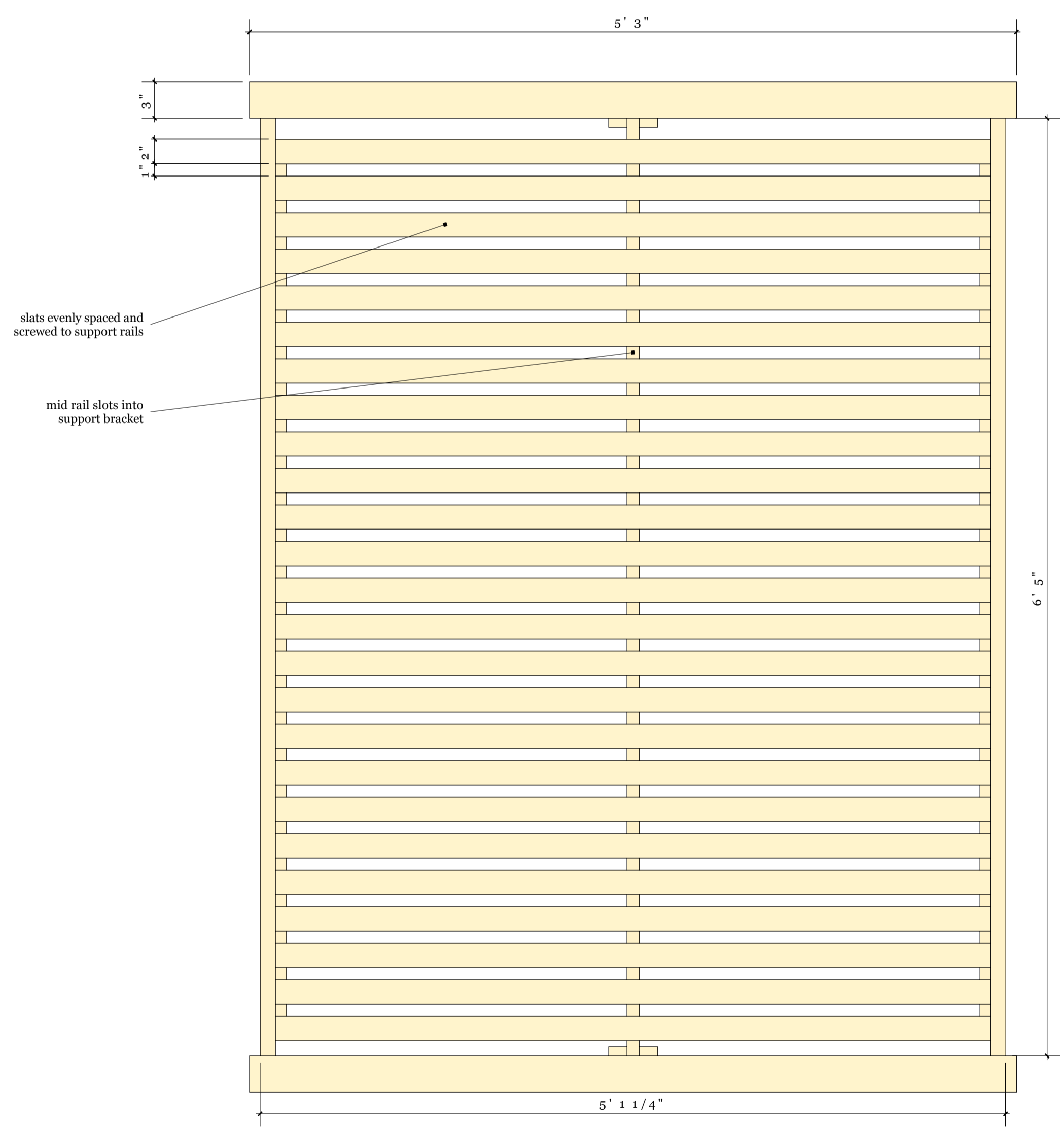


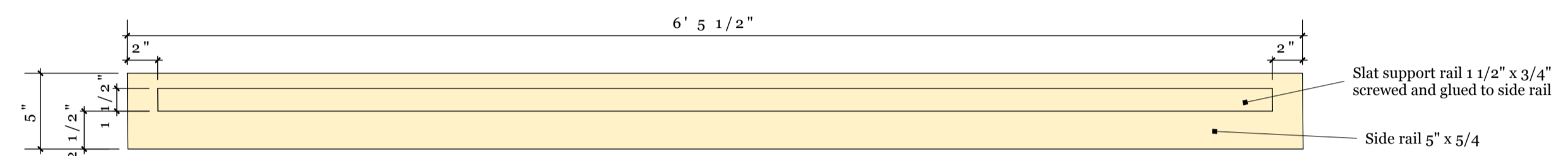
**A** Headboard  
001 scale: 1:8



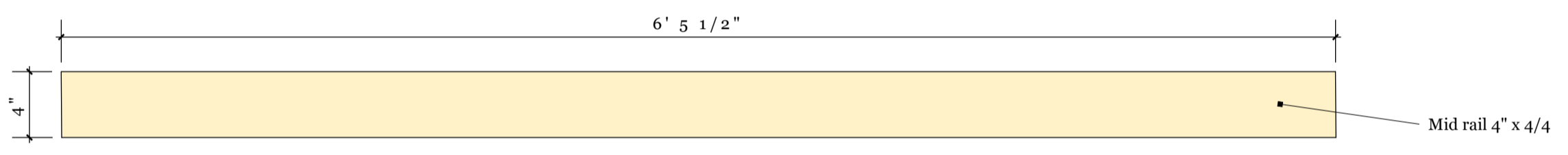
**A** Footboard  
002 scale: 1:8



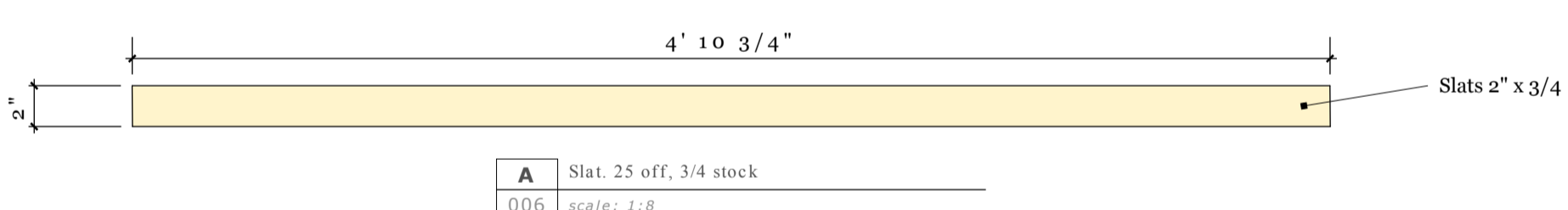
**A** Plan view  
003 scale: 1:8



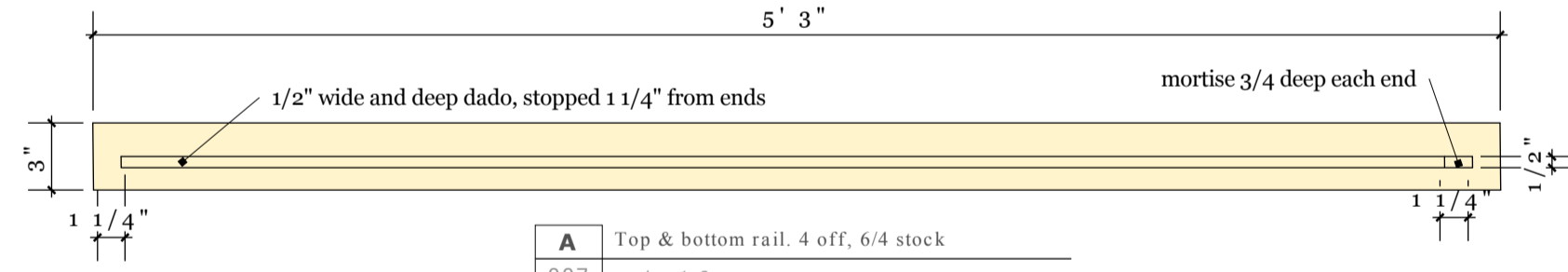
**A** Side rail. 2 off, 5/4 stock  
004 scale: 1:8



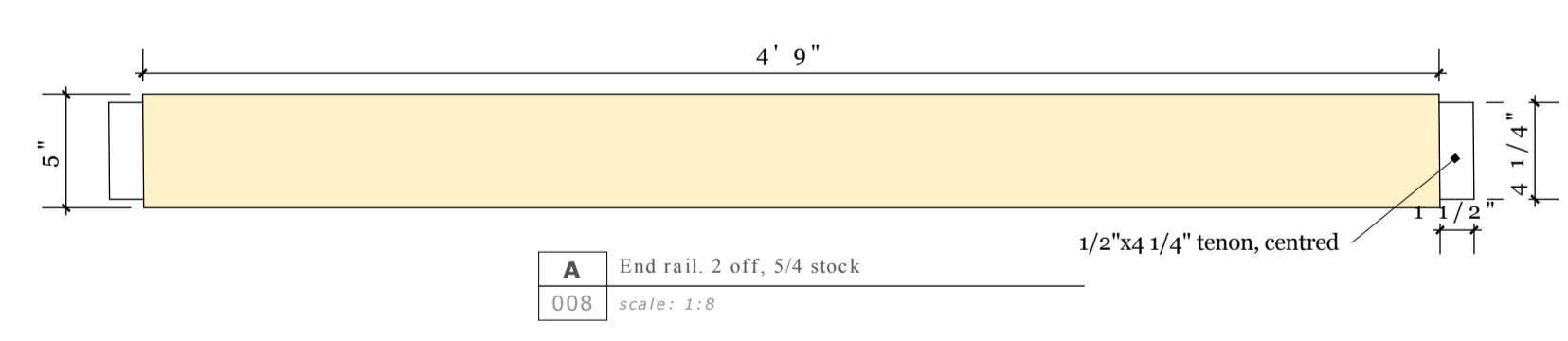
**A** Mid rail. 1 off, 4/4 stock  
005 scale: 1:8



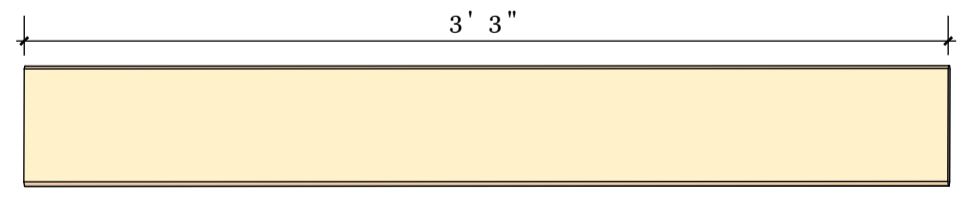
**A** Slat. 25 off, 3/4 stock  
006 scale: 1:8



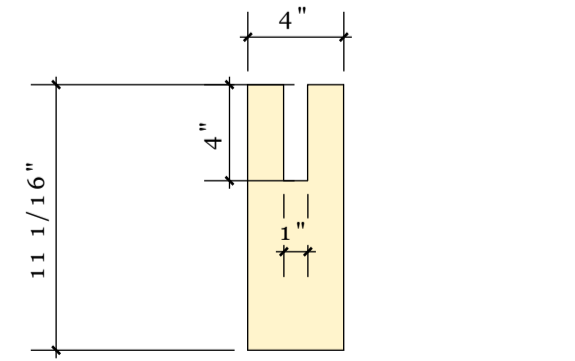
**A** Top & bottom rail. 4 off, 6/4 stock  
007 scale: 1:8



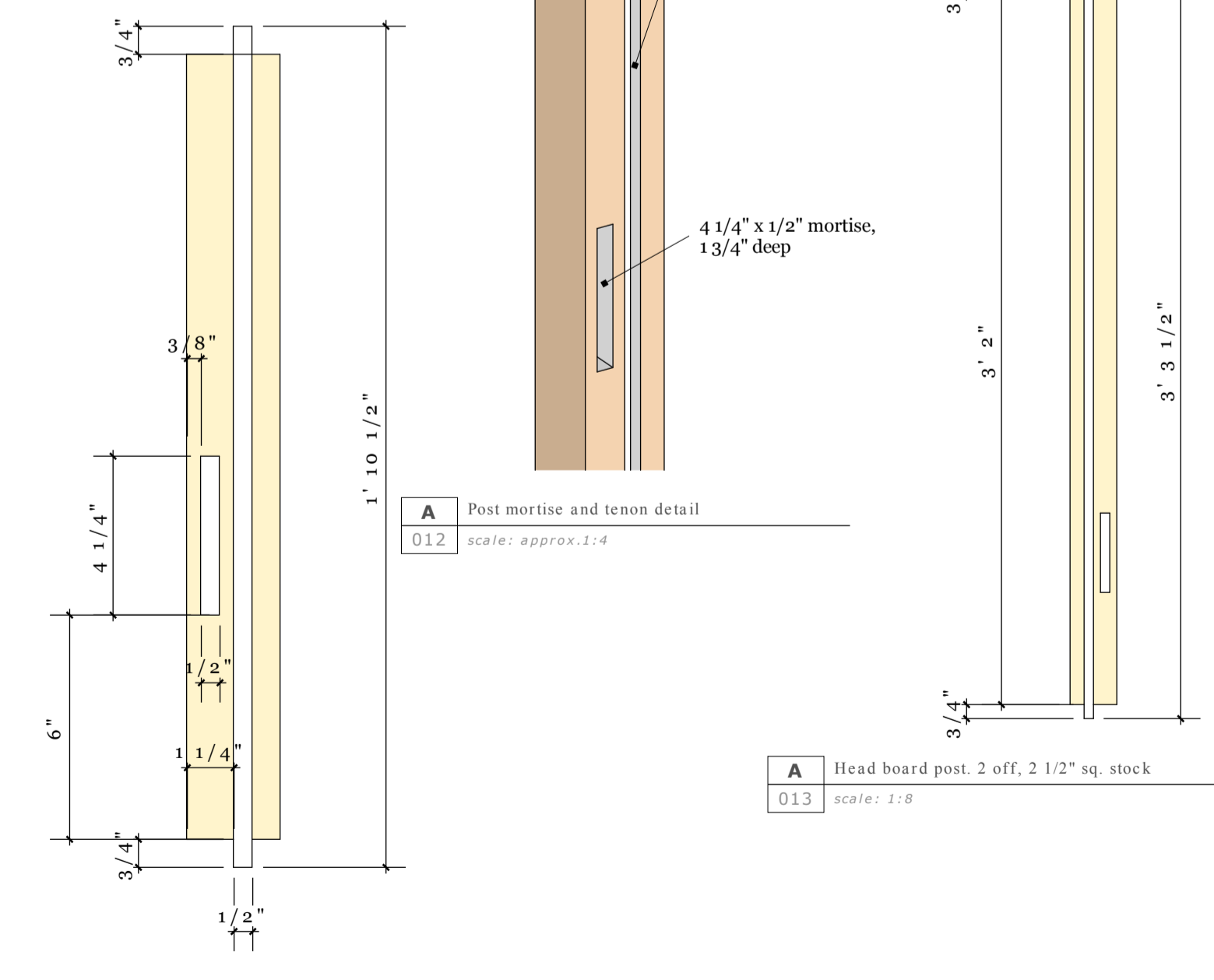
**A** End rail. 2 off, 5/4 stock  
008 scale: 1:8



**A** Planks. # to suit, 1/2" stock  
009 scale: 1:8



**A** Mid rail support bracket. 2 off, 4/4 stock  
010 scale: 1:8



**A** Post mortise and tenon detail  
012 scale: approx. 1:4

**A** Head board post. 2 off, 2 1/2" sq. stock  
013 scale: 1:8

The head board and foot board are identical in all respects except the height of the posts and planks.

The top & bottom rails are 3" x 1 3/8" with edges softened to your taste; chamfering, roundovers, beading, whatever suits your style and tool selection. Stopped dados are 1/2" wide and deep, and stop 1 1/4" from each end. The outer 1 1/4" needs to be 3/4" deep to match the tenons on the posts.

The posts are 2 1/2" sq. with 3/4" long tenons at each end, aligned with the stopped dados in the top & bottom rails that hold the planks. Stopped chamfers were used on my original but feel free to use other methods of softening the corners. It would be possible to use through tenons here, increasing them to say 1" sq centred on the post. This would necessitate changes to the top & bottom rail dado/mortise.

The planks are random width (anything between 3 & 5" seems to work nicely visually) and 1/2" thick to fit firmly but not tightly in the dados - they should not be glued except the outermost planks can be glued into the post dados. Use your favourite tongue & groove profile to join them and place them in a pleasing arrangement. Knots, blemishes and checks can count as decoration if you look at them the right way.

The side rails need to be good strong stock since they take a lot of load. 5" x 5/4 should be a minimum, with no defects near the top or bottom edges. Connecting them to the headboard and sideboard is up to you; bedbolts are an old favourite in the US, I used metal quick-connect brackets.

Rough cut list:-

Head post	2	2 1/2" sq. x 3'4"
Foot post	2	2 1/2" sq. x 1'11"
End rail	2	5/4 x 5" x 5"
Top & bottom rail	4	6/4 x 3" x 5'3"
Side rail	2	5/4 x 5" x 6'6"
Slat support rail	2	3/4 x 1 1/2" x 6'3"
Slat	25	3/4 x 2" x 4'11"
Head planks	?	1/2" random width x 3'3" to fill head board
Foot planks	?	1/2" random width x 1'10" to fill foot board
Mid rail	1	4/4 x 4" x 6'6"
Mid rail support bracket	2	4/4 x 4" x 12"
Foot	4	2 1/2" sq tapered or shaped to suit, or use bun feet, castors etc to taste

MM/DD/YY	REVISIONS	REMARKS
1		
2		
3		
4		
5		



Rustic Pine Bed

Parts